

Quick glance: **RWU EMERGENCY ACTION PLAN**

Outdoor Warning System (public address/siren warning)

- All waterfront programs will discontinue operations immediately and take action.
- If the siren is heard but voice instructions are not clearly understood, it is recommended that listeners seek shelter and then get more information.

Individual responsibilities in case of an accident/incident

Coaches/Support Boats

1. Assess nature of accident/incident and whether or not it is life threatening
2. Notifying Shore Base and Regatta Chair of the nature of the emergency and whether or not assistance is needed
3. Provide life support CPR or First Aid, if needed
4. Transport injured to RWU Learning Platform

RWU Public Safety **401-254-3333**
Emergency line

Regatta crisis plan

DROWNING EMERGENCY

1. Responding support staff should assess the situation and attempt to get rescue victim from the water.
2. If the victim is unresponsive, inform RWU Public Safety or Shore Base or call 911.
3. Begin life-saving services.

POSSIBLE CONCUSSION

US Sailing's standard is: Sailors who are hit in the head or become unconscious during practice or competition may not return to practice or competition until receiving a written authorization from a doctor, licensed neuropsychologist, certified athletic trainer, or another appropriately trained licensed health care professional.

Record the following information to help a health care provider in assessing the sailor after the injury:

- Cause of the injury and force of the hit or blow to the head or body
- Any loss of consciousness (passed out/knocked out) and if so, for how long
- Any memory loss right after the injury
- Any seizures right after the injury
- Number of previous concussions (if any)

DENSE FOG

1. RC Signal Boats must stay anchored on station where competitors last started. Usage of all sounds and navigation lights, including radar if available, is mandatory.
2. A careful checklist of sail numbers is vital. Racers should be instructed to stay within hailing distance of the RC Signal Boat and await further instructions.
 - Refrain from giving a compass course to the harbor
 - Patrol Boat to escort fleet into the harbor when conditions warrant

CONTACT INFORMATION

VHF Channel—72

ORGANIZATION NUMBERS

Race Committee

PRO Carol Ewing 305-785-4777
Safety Boat Richard Feeny 415-233-1630

Judges

Chief Judge John Mooney 516-287-0164

Coaches

Philip Muller 2niner Skiff Squad 954-257-9495
Alex Hernandez Team Canada 401-396-6589

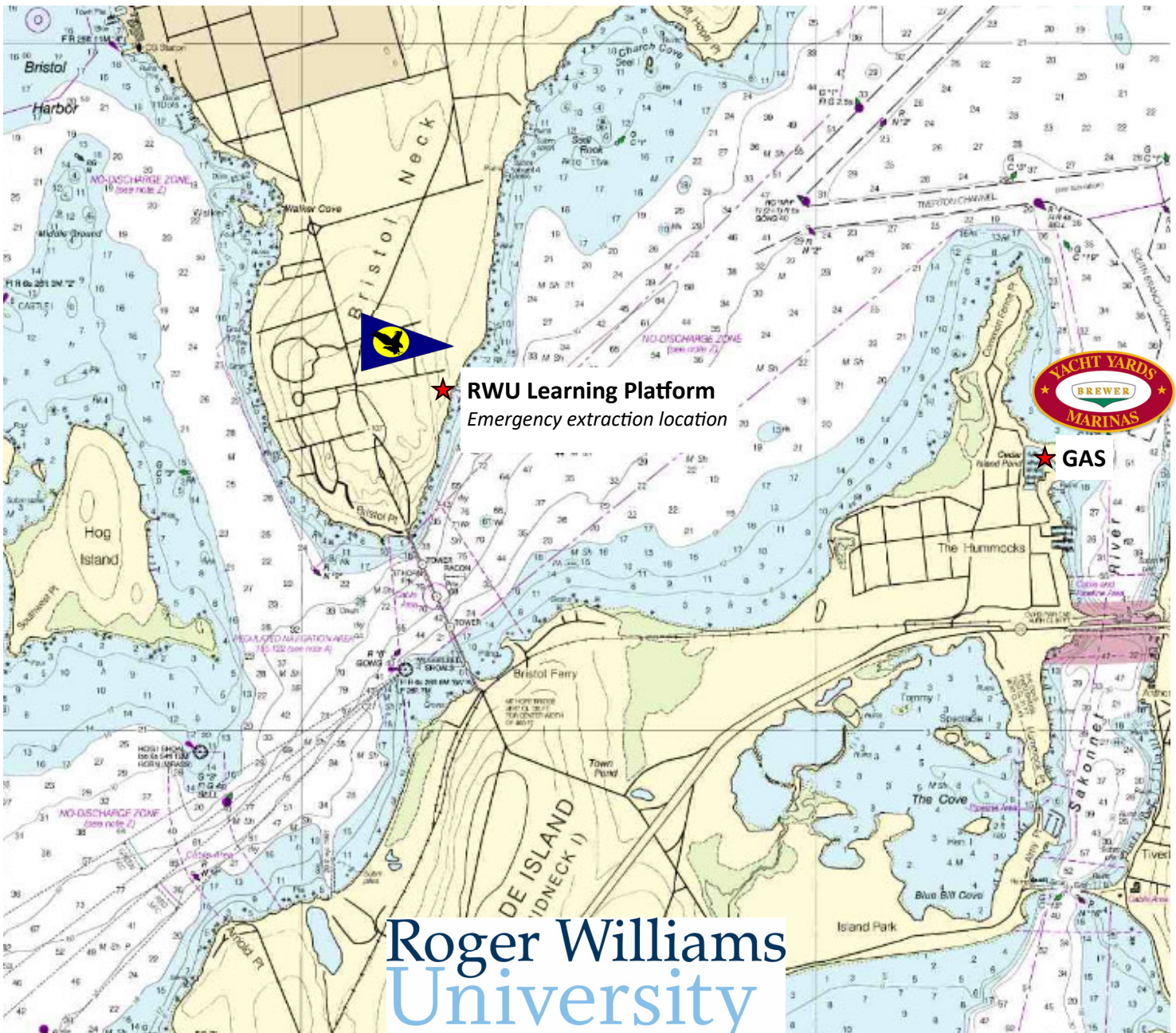
EMERGENCY NUMBERS

RWU

RWU Public Safety Emergency Line 401-254-3333
Non-emergency 401-254-3611

Bristol

Bristol Harbormaster Gregg Marsili 401-662-6595
Bristol Police (non-emergency) 401-253-6900



Roger Williams University • 1 Old Ferry Road • Bristol, RI 02809 • 41.649833, -71.256476