

49er/49erFX North American Championship

At Roger Williams University

June 24-27, 2021

Organizing Authority (OA) – Bristol Yacht Club
In conjunction with the North American 49er Class
and the International 49er Class Association

A boat is not permitted to protest another boat for breaking the Sailing Instructions (SIs) noted by [NP]. The penalty for breaking those SIs noted by [DP] may be less than disqualification at the discretion of the protest committee (PC). This changes RRS 60.1.

1 RULES

- 1.1 The regatta will be governed by the rules as defined in The Racing Rules of Sailing (RRS) 2021-2024.
- 1.2 Appendix T, (Arbitration), may apply, at the discretion of the Protest Committee.
- 1.3 In the case of a conflict between the Notice of Race and these SIs, the SIs and any amendments to them shall apply. This changes RRS 63.7.
- 1.4 All competitors, coaches, support persons, and volunteers agree by participating to follow the rules and restrictions of Roger Williams University. The OA reserves the right to modify these instructions as it, in its sole discretion, deems necessary to preserve the health of competitors, support personnel, spectators, race officials, and other volunteers at the event, and to comply with current state and local guidelines governing response to the COVID pandemic.

2. RECALL NUMBERS [DP] [NP]

Recall numbers will be the sail number the boat is displaying, regardless of her registration number.

3. NOTICES TO COMPETITORS

- 3.1 Notices to competitors (including protest notifications) will be posted on the official notice board located on the web site, and also posted as a courtesy on the physical notice board on the first floor of the boat house at Roger Williams. Failure of a boat to receive or read any such notices will not be grounds for redress. This changes RRS 62.1(a).
- 3.2 With the exception of those pertaining to instructions given orally on the water, all questions to the race committee (RC), Protest Committee (PC), or OA must be made in writing and will be posted and answered, in writing, on the official notice board.

4. CHANGES TO SAILING INSTRUCTIONS

- 4.1 Changes to the SIs will be posted, as described in SI 3.1, no later than 0900 each morning on the day it takes effect, except that any change to the schedule of races will be posted no later than 1900 the day before a change will take effect.
- 4.2 Oral changes to the SIs may be given on the water. The RC signal boat shall display code flag "L" and competitors shall approach the signal boat and receive the oral change while code flag "L" is displayed. It may also make courtesy broadcasts about such changes to the coaches on VHF channel 78A.

5. SIGNALS MADE ASHORE

- 5.1 Signals made ashore will be displayed from the RWU Sailing Center flagpole.
- 5.2 The display of code flag "L" ashore indicates that a new announcement has been posted. Announcements may also be broadcast as a courtesy via VHF channel 78A for coaches to distribute to competitors.
- 5.3 When flag "AP" is displayed ashore, the warning signal for the next race will be made not less than 45 minutes after AP is lowered. This changes RRS Race Signals.

6. SCHEDULE

6.1 Thursday, June 24
0900-1800 Registration

Friday, June 25
0730-0930 Registration
1000 Mandatory Competitor & Coaches Briefing
1200 First Warning for 29ers
1300 First Warning for 49ers/FX

Saturday, June 26
1100 First Warning Signal for 29ers
1200 First Warning for 49ers/FX

Sunday, June 27
1100 First Warning Signal for 29ers
1200 First Warning for 49er/FX
1500 Time limit for Last Warning Signal
Prize Giving As soon as possible – Boat House

6.2 A maximum of twelve (12) races are scheduled. No more than five (5) shall be sailed in a day.

6.3 Three (3) races are required to be completed to constitute a series.

7. FORMAT OF RACES AND PENALTY SYSTEM

7.1 Each class will sail as a separate fleet, except that 49ers and 49erFX may sail as one fleet at the OA's discretion.

7.2 Unless the course is shortened to finish at a windward mark, penalties within three (3) boat lengths of the windward mark or on the offset leg, if used, may be delayed and taken as soon as possible on the subsequent leg. This modifies RRS 44.2.

8. CLASS FLAGS

The class flags are as follows:

29er: White flag with a black 29er insignia

49er: White flag with a red 49er insignia

49erFX: Blue flag with a red 49erFX insignia

9. RACING AREA

Racing area will be Mt. Hope Bay, or south of Hog Island, just west of the Mt. Hope Bridge.

10. THE COURSES

10.1 The diagrams in Attachment B show the courses, including the order in which marks are to be passed. All rounding marks shall be left to port, except Marks 4S/4P, which are gate marks.

10.2 If one of the gate marks is missing, the mark in position will be rounded to port.

11. MARKS

Class	Mark 1 (Windward)	Mark 4 (gate)	Start Line Mark	Finish Line Mark
29er	Orange	Orange	Yellow	Yellow
49er / 49erFX	Yellow	Orange	Yellow	Yellow

12. THE START

12.1 Races will be started in accordance with RRS 26.

12.2 The starting line will be between a staff displaying orange flag on the RC signal and the course side of a nearby yellow mark, or the flag displaying an orange flag on the anchored pin-end boat.

12.3 In the event a boat(s) is scored BFD, the RC will display her recall number on a white board on the signal boat.

13. COURSE CHANGES

- 13.1 In the event of a course change, the RC will move the original marks, not replace them.
- 13.2 The RC may make minor adjustments in the course without signaling a change of course. This changes RRS 33.
- 13.3 No mark will be moved while boats are on the leg it ends.

14. THE FINISH

The finishing line will be between a staff displaying a blue flag on the finish line boat and the course side of a nearby mark as described in SI 11 and as shown in Attachment B.

15. TIME LIMITS

Class	Time limit	Mark 1 time limit	Finish window
29er	45 minutes	15 minutes	10 minutes after the first finisher
49er/FX	45 minutes	15 minutes	10 minutes after the first finisher

- 15.1 If no boat has passed Mark 1 within the Mark 1 Time Limit, the race shall be abandoned.

16. PROTESTS AND REQUESTS FOR REDRESS

- 16.1 Protest hearings may be preceded by an *Arbitration* meeting, at the protest committee's discretion.
- 16.2 Protest forms will be available near the official notice board.
- 16.3 The protest time limit is 30 minutes after the RC Signal boat docks.
- 16.4 Notices will be posted no later than 15 minutes after the expiration of the protest time limit to inform competitors of hearings in which they are parties or named as witnesses. Protest hearings will be conducted at Roger Williams Boathouse as soon as possible and in the approximate order in which they were filed.
- 16.4 Notice of protest by the RC or PC will be posted to inform boats under RRS 61.1(b).
- 16.5 On the last day of racing, a request for redress based on a PC decision or scoring error shall be delivered within the protest time limit or within 30 minutes of the decision or results being posted, whichever is later. This changes RRS 62.2.
- 16.6 It is each boat's sole responsibility to check the notice board promptly after the end of protest filing time to see if she is cited in a protest. Should any party fail to appear when called for a hearing, the PC may proceed in accordance with RRS 63.3(b).
- 16.7 Representatives of boats who are parties to hearings and their witnesses shall remain on call in the vicinity of the protest desk until excused by the PC.

17. SCORING

- 17.1 The Low Point System of Appendix A will apply with the following changes:
- 17.2 When fewer than six (6) races have been completed, a boat's score will be the total of her race scores. This changes RRS A2.
- 17.3 When six (6) or more races have been completed, a boat's series score will be the total of her race scores excluding her worst score.

19. SAFETY [DP] [NP]

- 19.1 All competitors shall wear a personal flotation device (PFD) at all times while afloat, except temporarily while changing clothes. Such PFD shall verifiably meet the requirements of either the sailor's national authority or of the government regulations that apply in the racing area. This changes RRS 40.
- 19.2 A boat retiring from a race shall notify any RC vessel before leaving the course, or, when that is impossible, the protest desk immediately after arrival ashore.
- 19.3 Boats that are not leaving the harbor to race shall inform the protest desk prior to the start of the first race of the day.
- 19.4 Prior to the warning signal of the first race she sails each day, each boat shall sail on starboard tack past the stern of the Signal Boat, and shall hail her sail number until acknowledged by the RC. It will be at the discretion of the PC to impose a penalty to any boat failing to comply with this SI.

20. SUPPORT PERSONS & SPECTATORS [DP]

- 20.1 Except when rendering assistance to a boat in danger, at the boat's request or at the request of the RC, support and coach boats shall stay 50 meters outside all areas where boats are racing from the time the warning signal for the first class to start has been displayed until the time the last boat finishes or the RC signals a postponement, general recall, or abandonment.
- 20.2 All support persons and spectator boats shall provide their own VHF radio and monitor VHF channel 78A to receive instructions and other information from the RC or OA while near the racing venue. All such boats shall additionally function as Safety Boats and follow instructions from the RC and the OA.
- 20.3 A hearing may be called if a coach or support boat fails to comply with the requirements of SI 20. The penalty for failing to comply with these requirements or the oral instructions of the RC or the OA will be at the discretion of the PC. The penalty may be imposed on any or all boats associated with the coach or support boat/s that are parties to the hearing, per RRS 64.4(b).

21. DISPOSAL OF TRASH & ENVIRONMENTAL IMPACT [DP]

- 21.1 Boats shall not purposefully discharge trash into the water. Trash may be put onto any RC or PC boat.
- 21.2 Single use water bottles are not permitted at this event.

22. ELECTRONIC COMMUNICATION [DP]

A competitor shall not send or receive electronic communications from the time he or she leaves the dock until after the last race of the day.

23. PRIZES

- 23.1 Prizes may be awarded to first through third place. Additional awards may be presented.

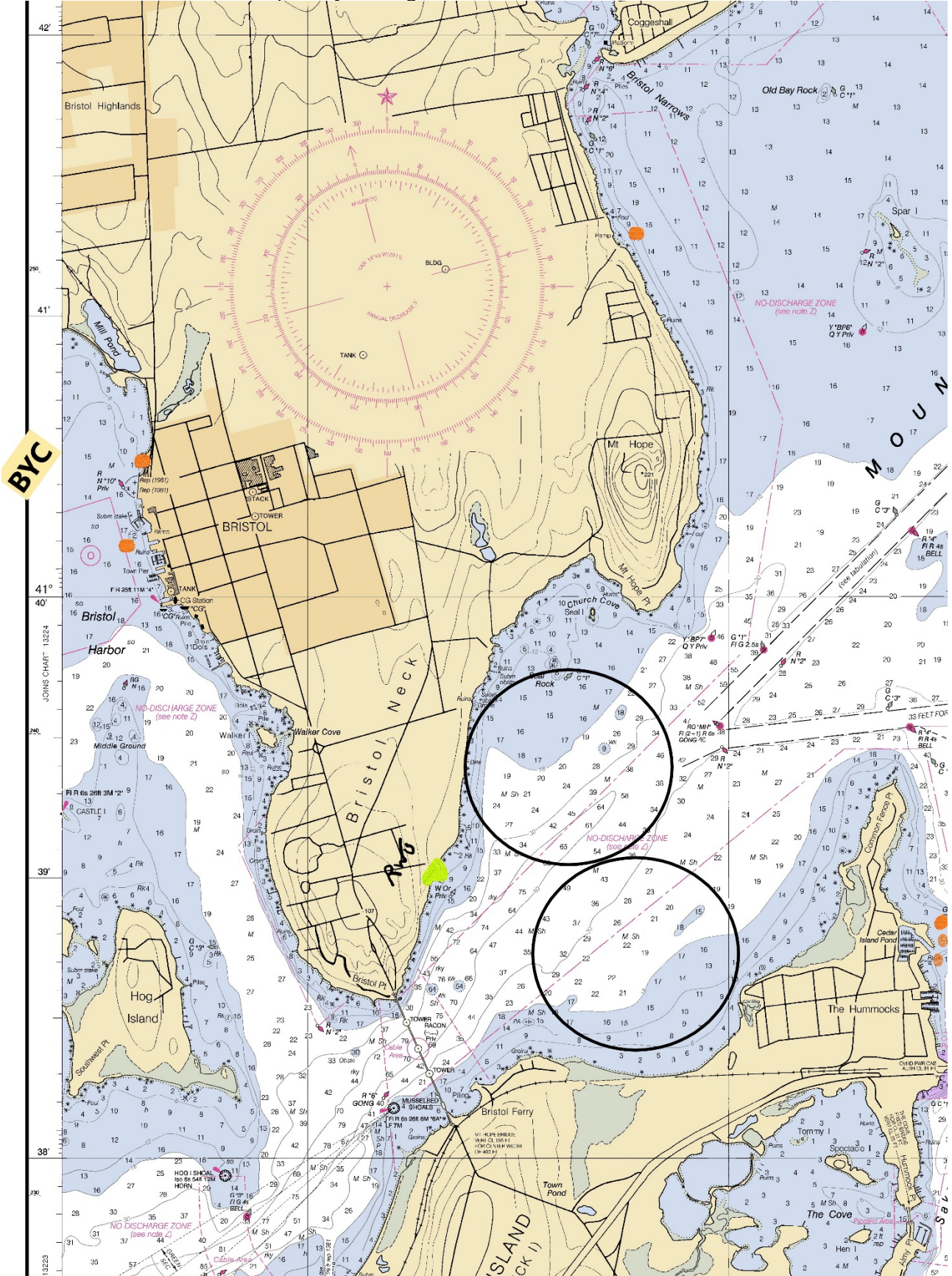
24. RISK, DISCLAIMER OF LIABILITY & PERSONAL CONDUCT

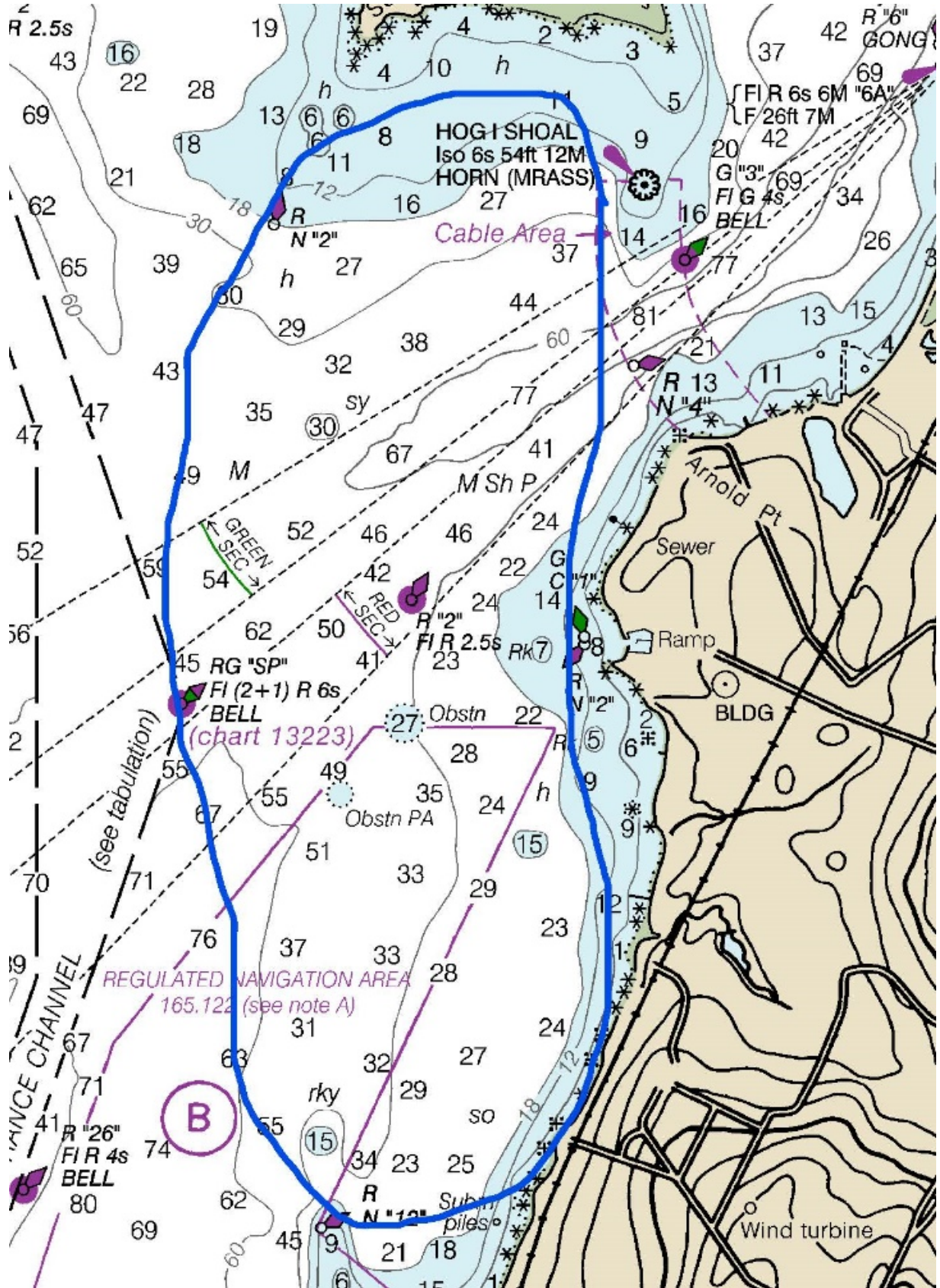
- 24.1 Competitors participate in the regatta at their own risk. See RRS 3 (Decision to Race). The OA will not accept any liability for material damage or personal injury or death sustained in conjunction with or prior to, during, or after the regatta.
- 24.2 The competitor will accept full responsibility for all his/her actions during any activity related to the event. This includes on-shore activities before, during, and after the regatta.
- 24.3 All competitors are expected to maintain the highest levels of conduct throughout the entire event. Enforcement of discipline and conduct shall be conducted as per RRS 69.1, and the policies and procedures of US Sailing (Regulation 15.01).

25. FURTHER INFORMATION

- 25.1 All official applications, notices, forms, lists and results will be posted at:
<https://29erusa.ourclubadmin.com/event.php?event=79>
- 25.2 For further information please contact Regatta Chairman Richard Feeny at Richard.feeny@gmail.com.

Attachment A: Course Charts
Mt. Hope Bay Racing Area





ATTACHMENT B: 49er/FX COURSE DIAGRAM

Mark 1
(49er/FX)

Mark 1A
(29er)

Mark 4

Start

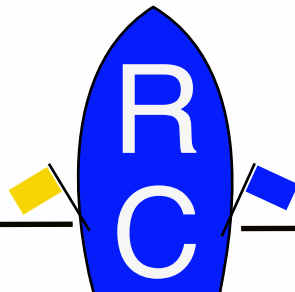
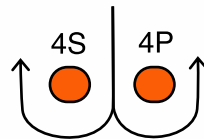
Finish

COURSE #1:

Start - 1 - 4 - 1 - Finish

The start mark may be replaced with an orange flag in a "pin end" boat.

NOTE:
A gate may be used
in place of Mark 4.



ATTACHMENT B (page 2): COURSE DIAGRAM

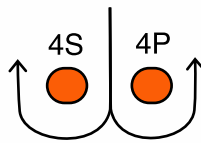
Mark 1
(49er/FX)

Mark 1A
(29er)

COURSE #2:

Start
1 (or 1A)
4
1 (or 1A)
4
Finish

NOTE:
A gate may be used
in place of Mark 4.



Mark 4

The start mark may be replaced with an orange flag in a "pin end" boat.

Start

Finish

